

# Play Area / Equipment Operational Inspection

LLANHARRY COMMUNITY COUNCIL

Complete

Score	100%	Flagged items	0	Actions	0
Document No.	000078				
Audit Title	LLANHARRY COMMUNITY COUNCIL				
Client / Site	Llanharry Recreation Ground				
Conducted on	06.05.2022 13:30 BST				
Prepared by	Jerry Widdas				
Location	Llanharry				
Personnel	Jerry Widdas				

## Audit

100%

## GENERAL SITE DESCRIPTION

100%

### Detail:

Yes

The recreation ground consists of a play area fenced by steel bow top fencing with self closing gates

A MUGA kick about area and a youth shelter

Both areas are accessed by Tarmac pathways

Benches and picnic tables are located within the play area and also outside the play area boundary



Photo 1



Photo 2



Photo 3



Photo 4



Photo 5



Photo 6



Photo 7

## ITEM

100%

### Manufacturer identification and date of installation

Yes

MUGA area supplied by PPL date unknown

1 X 2 seat swing supplied and installed by Urban Recreation in 2016

1 X Traditional cradle seat swing Wicksteed Leisure

1 X Traditional Igloo climber Wicksteed Leisure

1 X Wheelchair roundabout supplied and installed Urban Recreation Dec 2018

1 X Multiplayer Unit Proludic installed Feb 2022

1 X Steel cable ride Record Play

1 X Freestanding slide Record Play

2 X Spring animals Fahr Industries installed Feb 2022

1 X Teen Shelter David Ogilvie Engineering

1 X Cantilever Swing supplied Urban Recreation 2016

9 X Fitness Items supplied Urban Recreation October 2017

1 X Spinning Cup supplied and installed Urban Recreation Dec 2018



Photo 8



Photo 9



Photo 10



Photo 11



Photo 12



Photo 13



Photo 14



Photo 15



Photo 16



Photo 17



Photo 18



Photo 19



Photo 20



Photo 21



Photo 22



Photo 23

## Item Condition

Safe

At the time of inspection all the equipment was found to be in a safe and useable condition



Photo 24

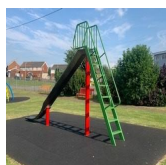


Photo 25

## Safety Surfacing

Safe

All items of play equipment are located on wet pour rubber safety surfacing



Photo 26



Photo 27

## Equipment Findings

Safe

The flat seats on the swing are starting to show the steel insert, monitor for further deterioration and replace

One of the basket swing suspension ropes has been wrapped, monitor

A small fire has caused minor damage to the ball court surface, an additional fire in the opposite corner has caused minor damage to the ball court surface and paintwork on the steel grid

The Spring stopper at the end of the cable ride has broken, this is not currently a safety issue but may deteriorate further with time, monitor and plan to replace at convenient time in the future.

There is some wear on the toddler swing chains, monitor and plan for replacement in the future

There is a rubber cover missing from one of the sit up benches

The three round litter bins surrounding the football field have advanced corrosion



Photo 28

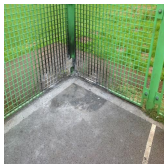


Photo 29



Photo 30



Photo 31

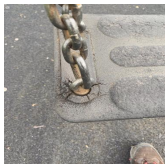


Photo 32

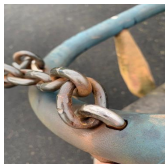


Photo 33



Photo 34



Photo 35

**Safety Surfacing Findings**

Safe

At the time of inspection all surfaces were found to be in a safe and useable condition

**Recommendations**

Yes

monitor items noted

**Other comments**

100%

Yes

New play unit and spring riders fitted with totally new safety surface  
Gaps in surface in cable ride were filled

**Inspector Sign Off**

*Jerry Widdas*

Jerry Widdas Routine And Operational Inspector (Cert OP1200)  
06.03.2022 21:28 GMT

## Appendix



Photo 1



Photo 2



Photo 3



Photo 4



Photo 5



Photo 6





Photo 7



Photo 8



Photo 9



Photo 10



Photo 11



Photo 12



Photo 13



Photo 14





Photo 15



Photo 16



Photo 17



Photo 18



Photo 19



Photo 20



Photo 21



Photo 22





Photo 23



Photo 24



Photo 25



Photo 26



Photo 27



Photo 28





Photo 29



Photo 30



Photo 31

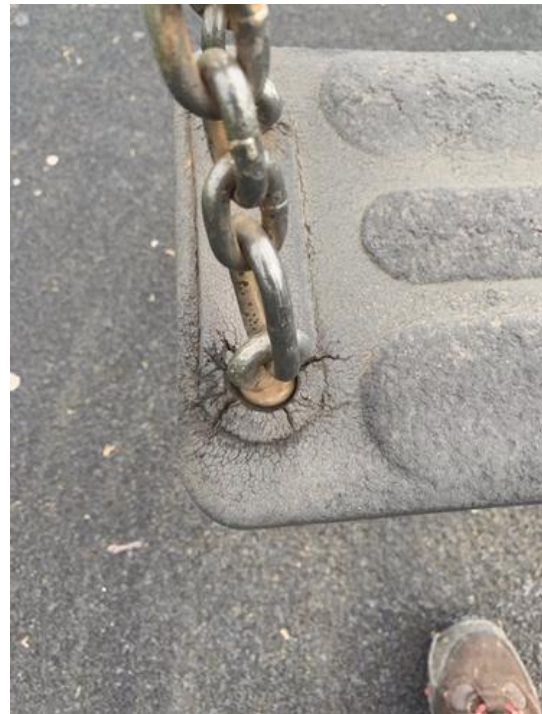


Photo 32

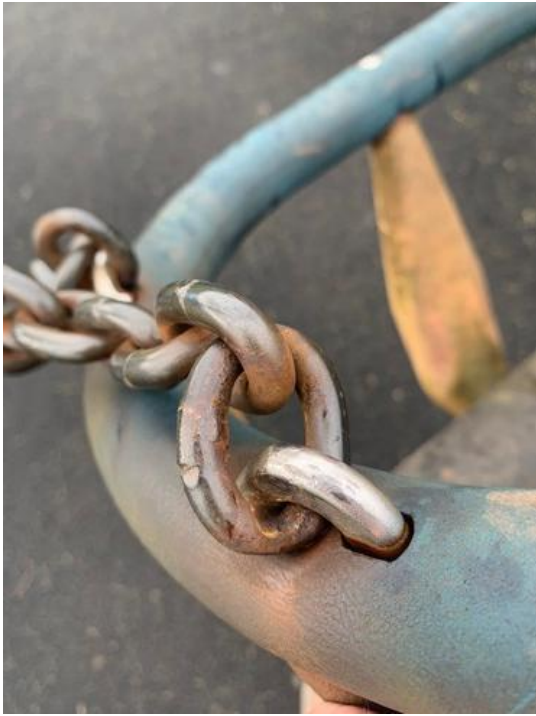


Photo 33



Photo 34



Photo 35